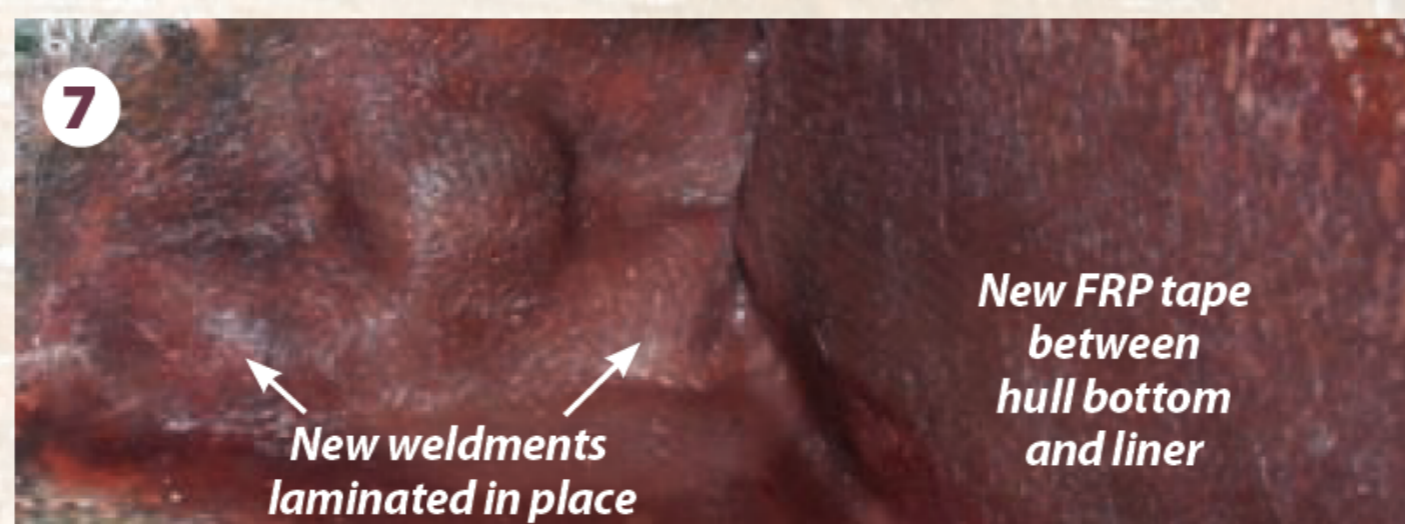
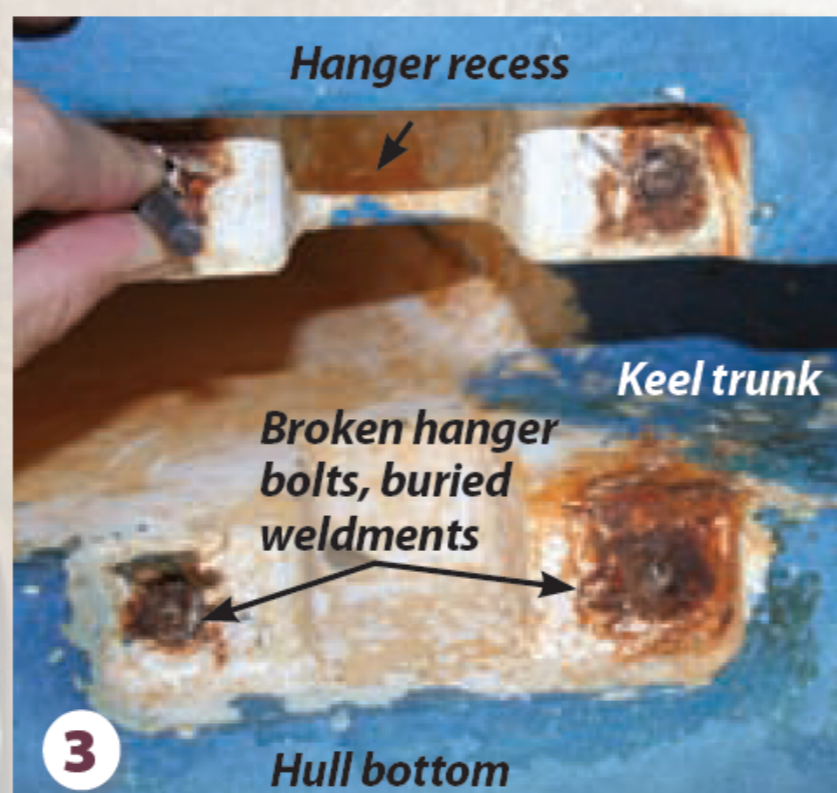
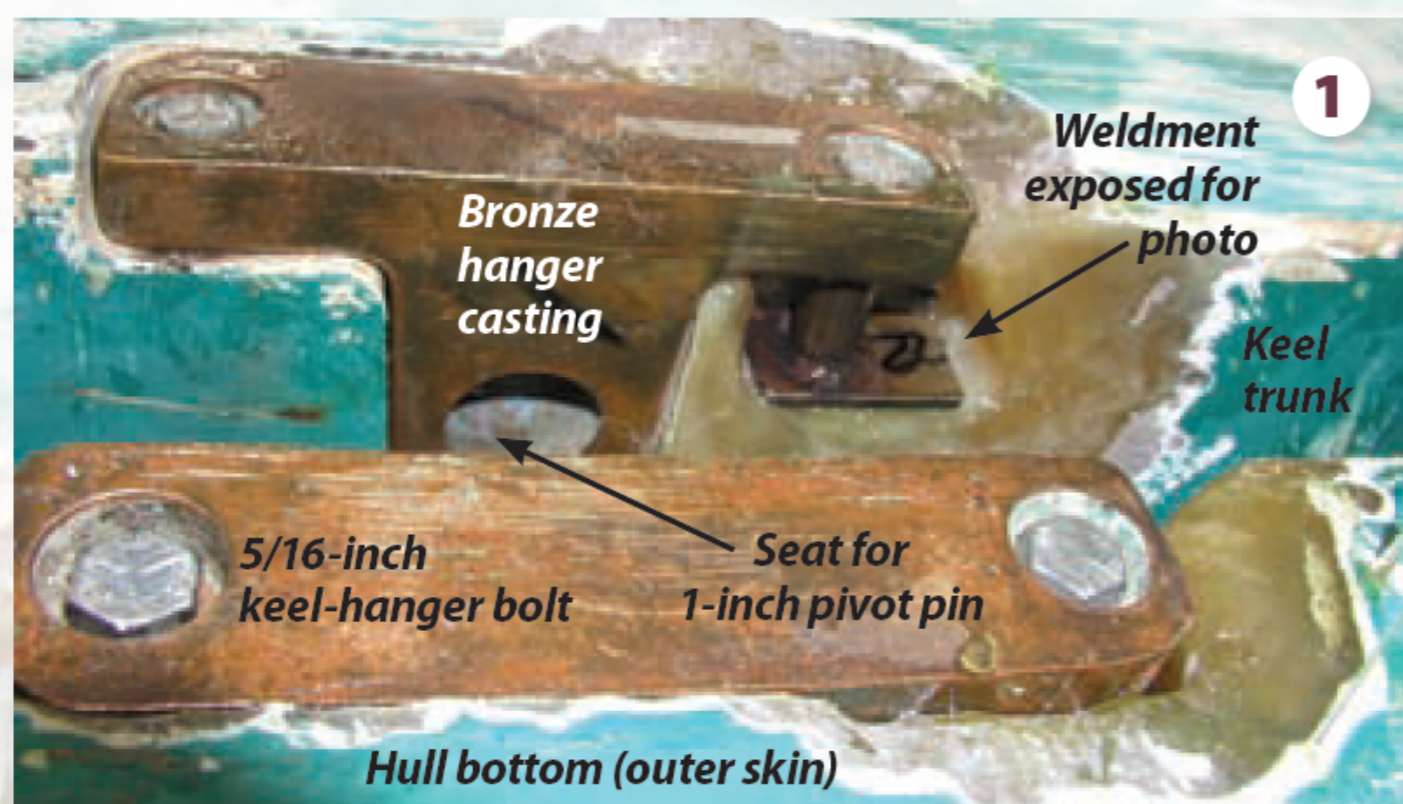


## SMALL BOAT REFIT

Top left photo by Bob Thomas



- 1** The dissected keel trunk of a different Catalina 22 shows the bronze hangers in place, with one weldment exposed.
- 2** Jelly's 600-pound keel, bronze hanger castings (port view), and pivot pin are lowered with a floor jack.
- 3** Bottom view into Jelly's swing-keel trunk reveals corrosion and bolt remnants in the weldments, buried in fiberglass.
- 4** A high-speed air saw is used to cut a hole in Jelly's keel trunk to access the starboard weldments.
- 5** The hole in the starboard side of the swing-keel trunk reveals a bulge where the starboard weldments are buried.
- 6** Grinding reveals the tops of the weldments on the port side of the keel trunk inside the settee locker. The weldments were then popped up from below using a metal punch.
- 7** Glass work covers the newly embedded weldment on the port side. The pan liner is also re-glassed to the hull.
- 8** The starboard side of the centerboard trunk is patched and ready for filling, fairing, and a new gelcoat finish.
- 9** The new weldment (top) and three of the original weldments. Two of the old weldments broke upon extraction, revealing how brittle and weak they had become.