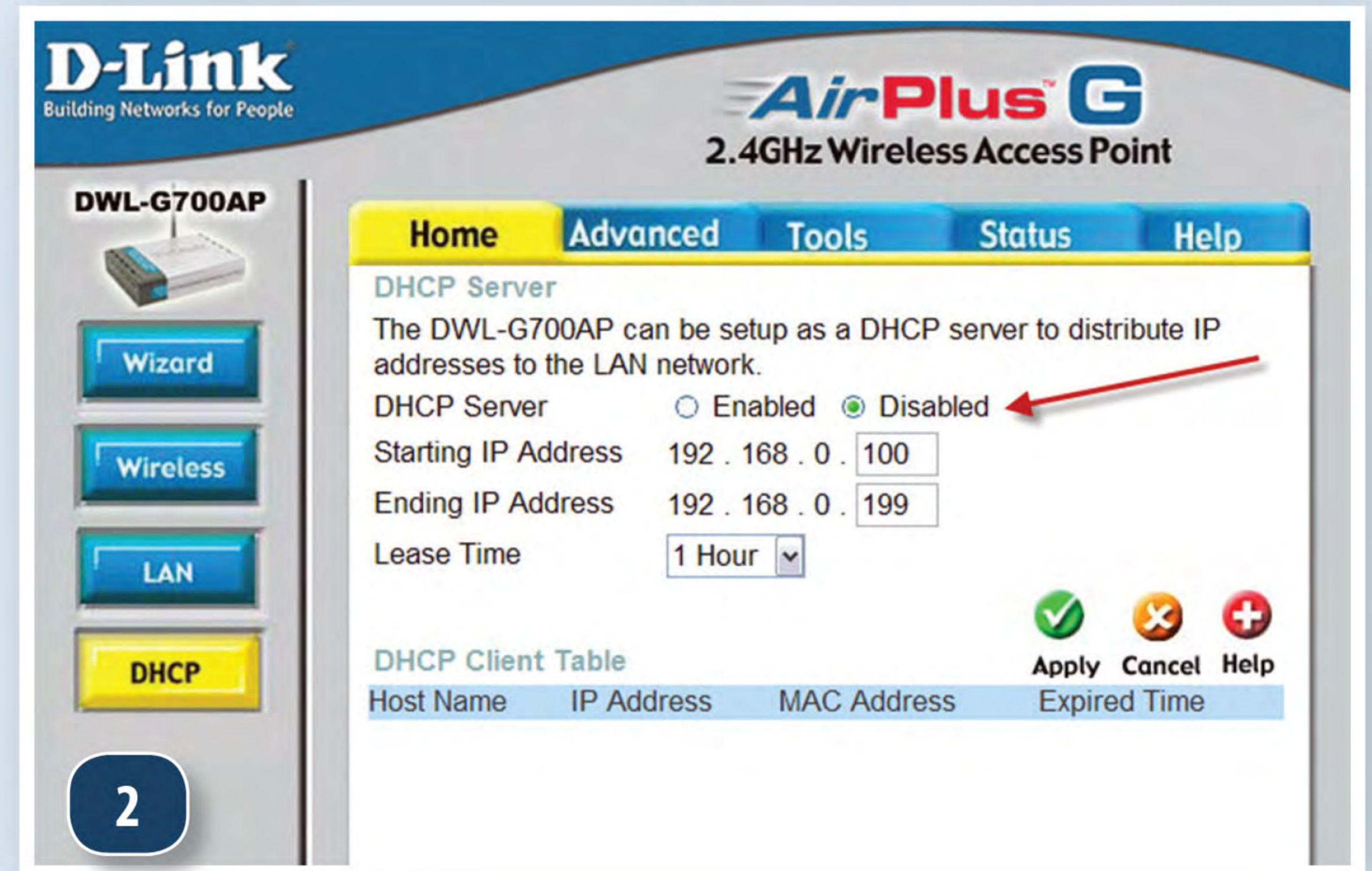


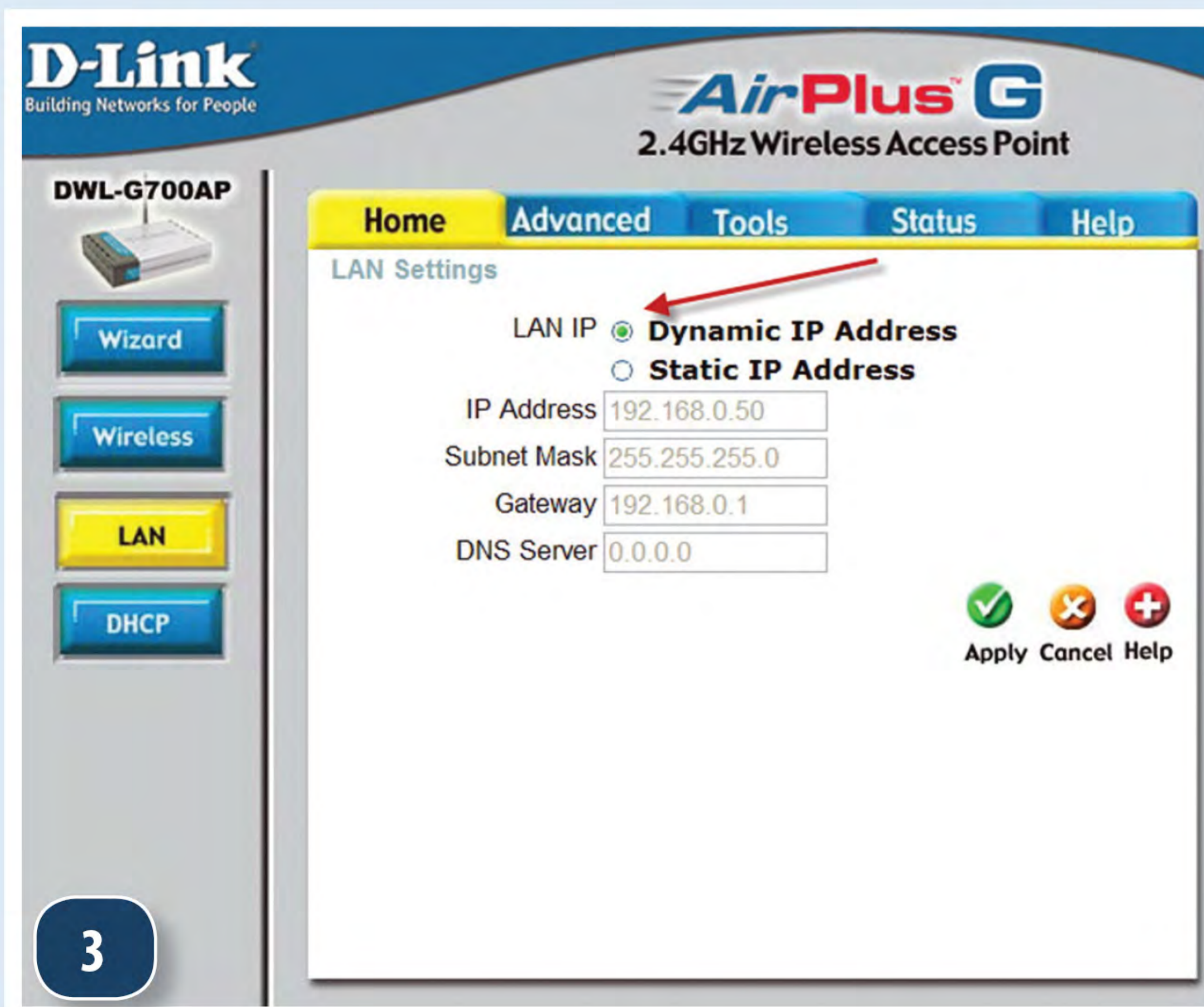


1

A CLOSER LOOK



2



3

Tweaking the Network

Installation takes place in two stages: Physically installing the devices and then configuring them. The physical installation is fairly straightforward; configuring requires some basic familiarity with computers.

1. Everything needed to create a cruiser's onboard network with Internet access for about \$160-180: a 50-foot roll of CAT 5 Ethernet cable, the D-Link G700AP Access Point, a 12- to 5-volt converter, the Engenius EOC2610, and below it, the POE injector. An external antenna and the required pigtail adds about \$20 to the price.
2. You must disable DHCP when configuring the DWL-G700A.
3. Set a Dynamic IP address when configuring the DWL-G700AP.